

## CubiQ

Technical details optional ironmongery

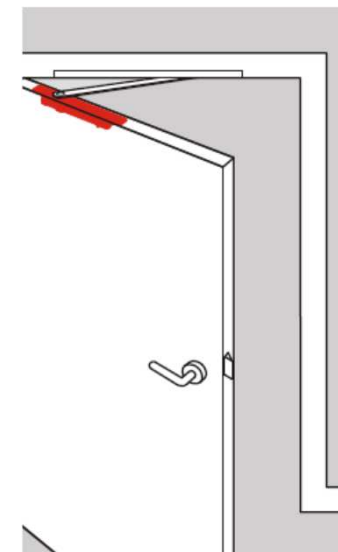
door closer / floor seal



**bod'or**

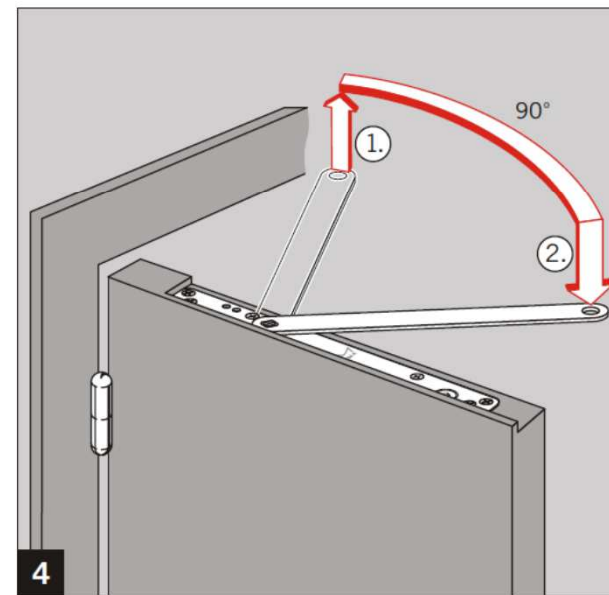
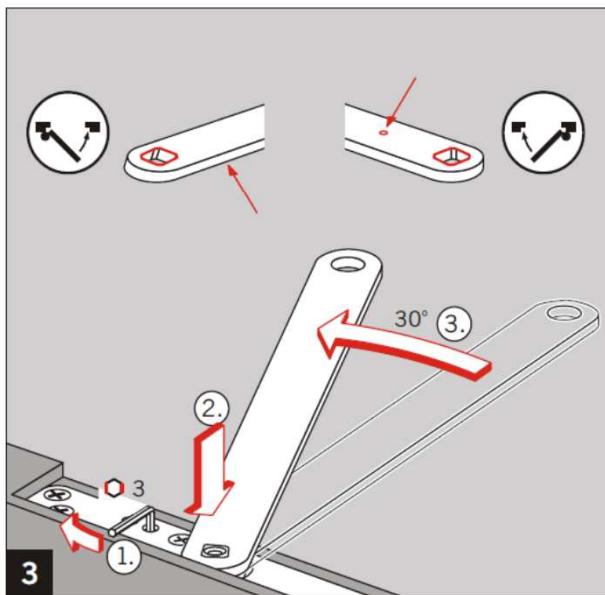
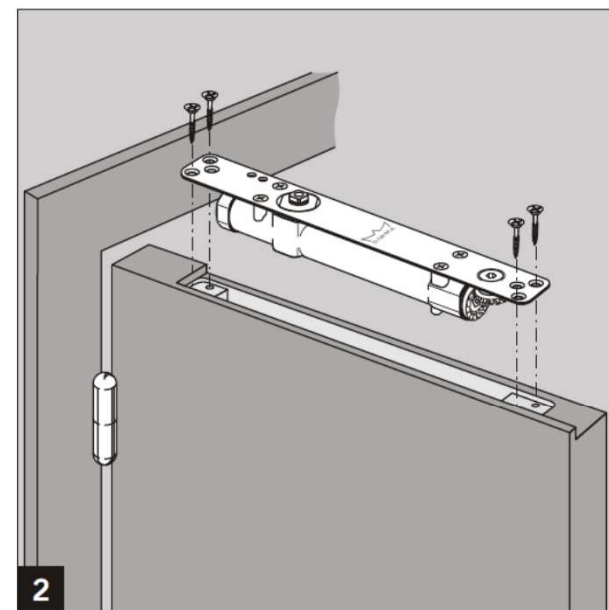
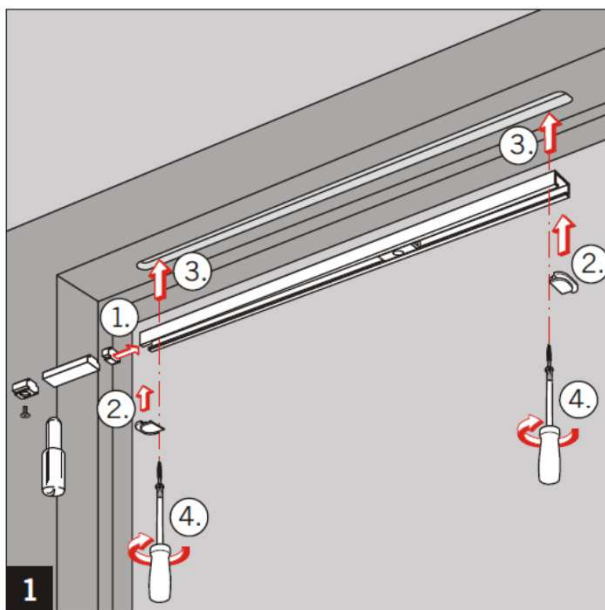
## Integrated door closer Dorma ITS 96

Material	Stainless steel
Application	CubiQ door with maximum weight of 100 kg Right and left turning doors  Simple setting up of closing force and speed
Tested in accordance with EN 1154	



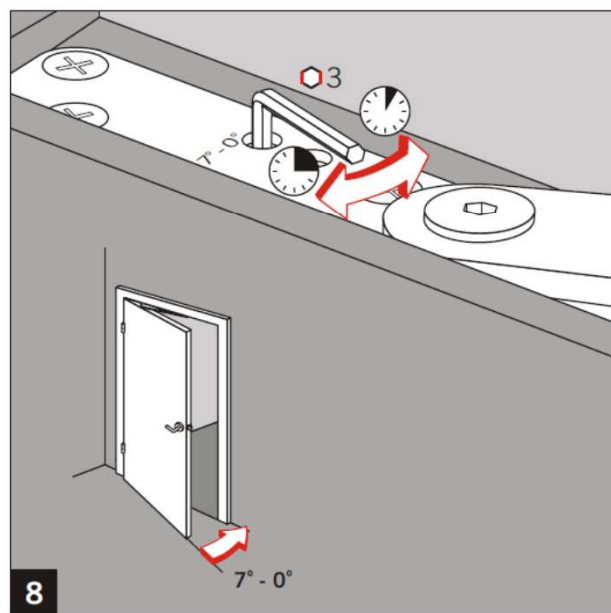
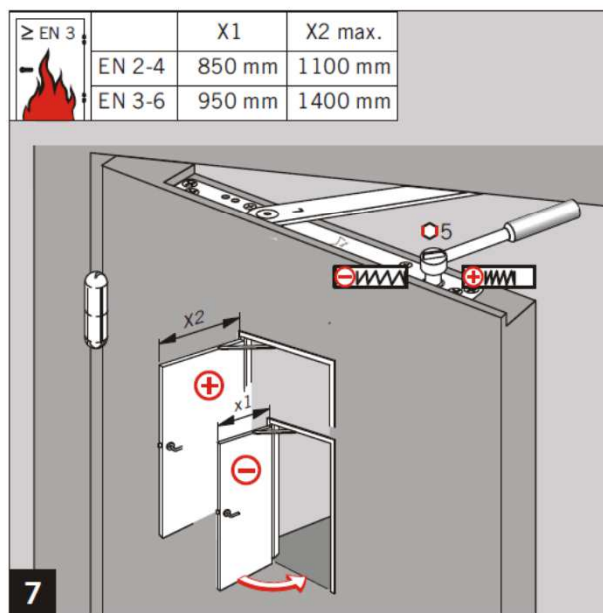
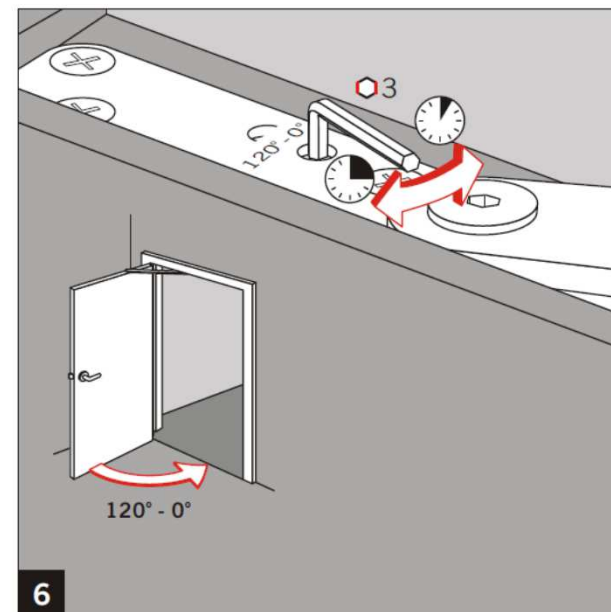
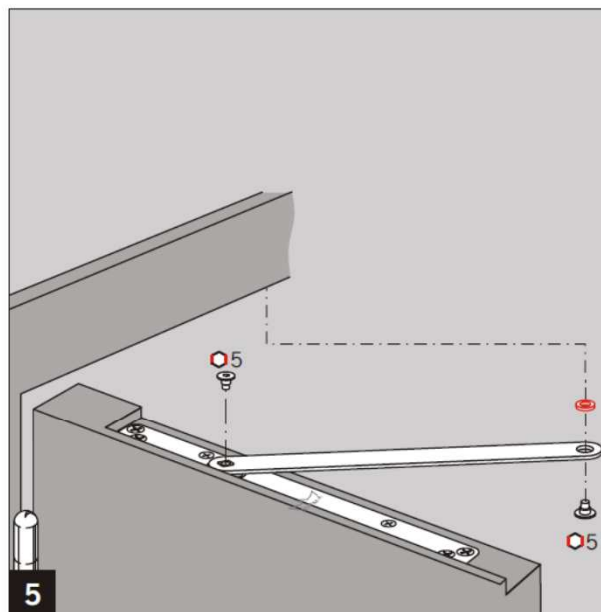
**bod'or**

## Installation integrated door closer

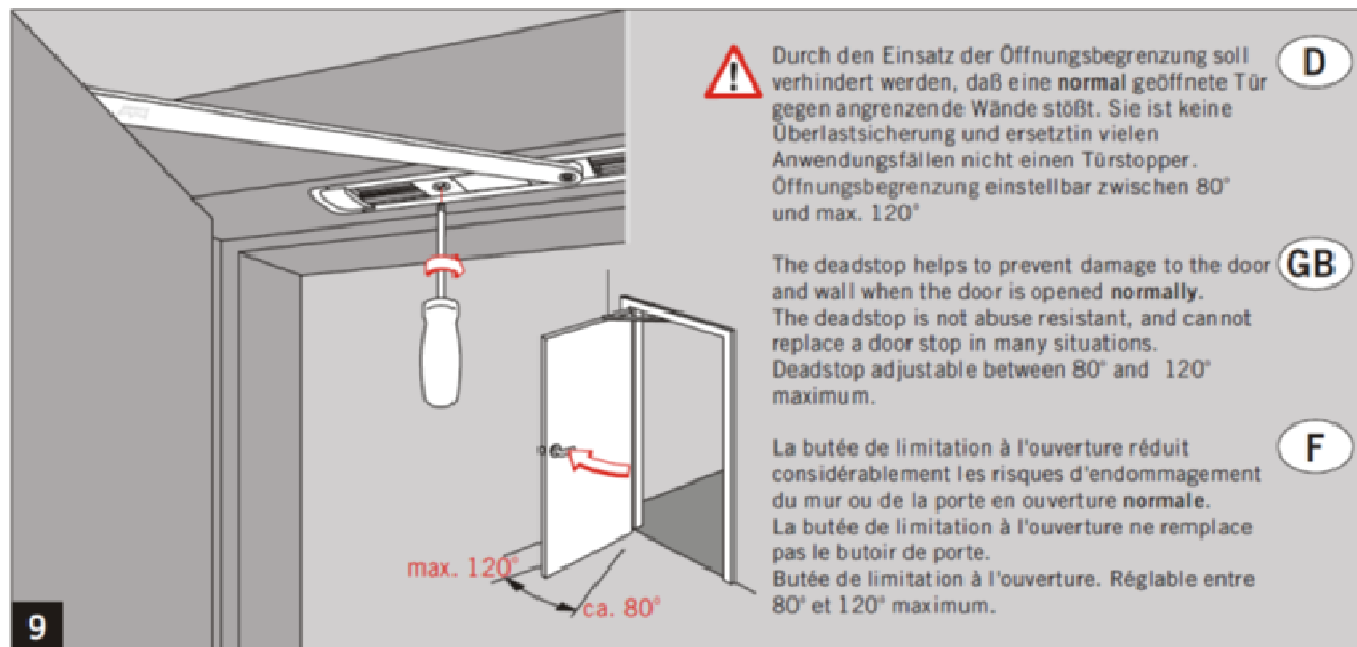


**bod'or**

## Installation integrated door closer



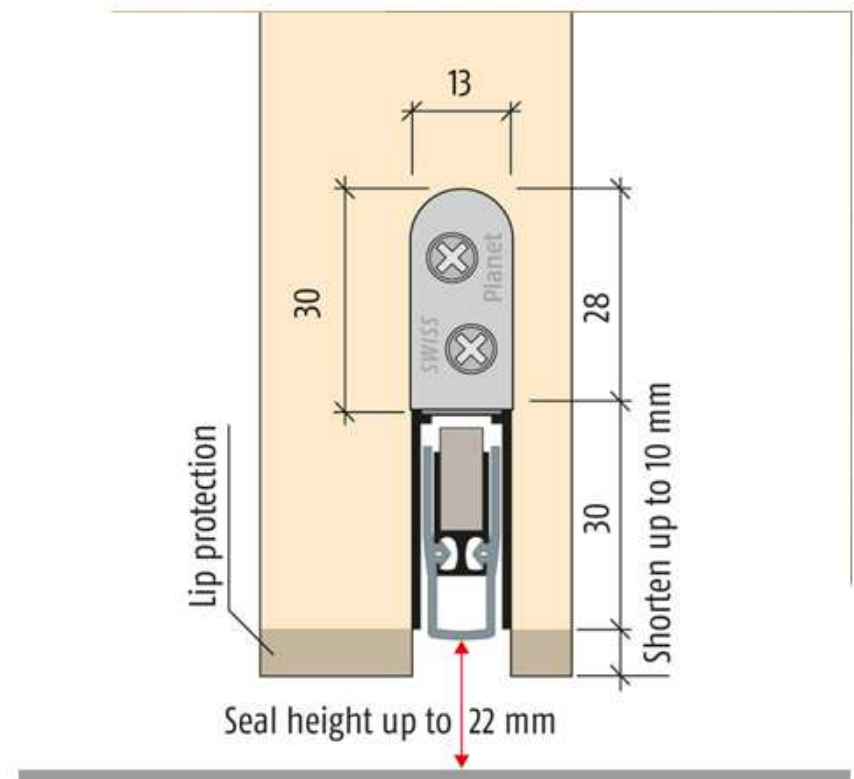
## Installation integrated door closer



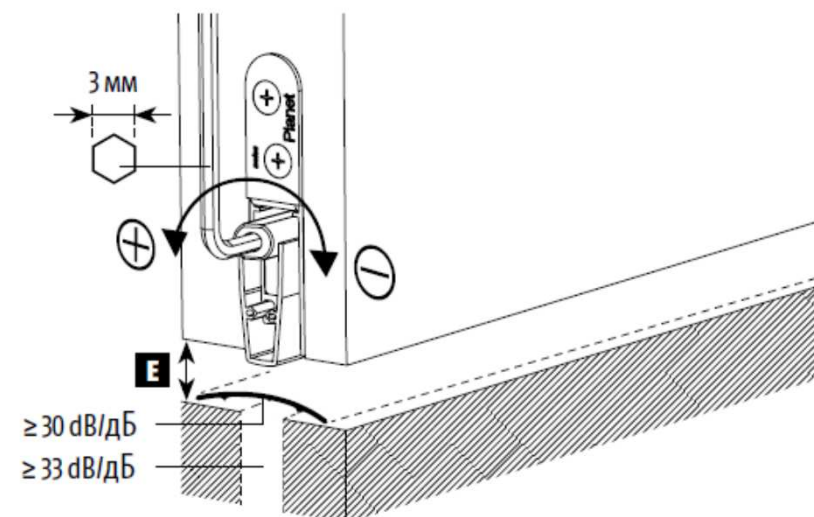
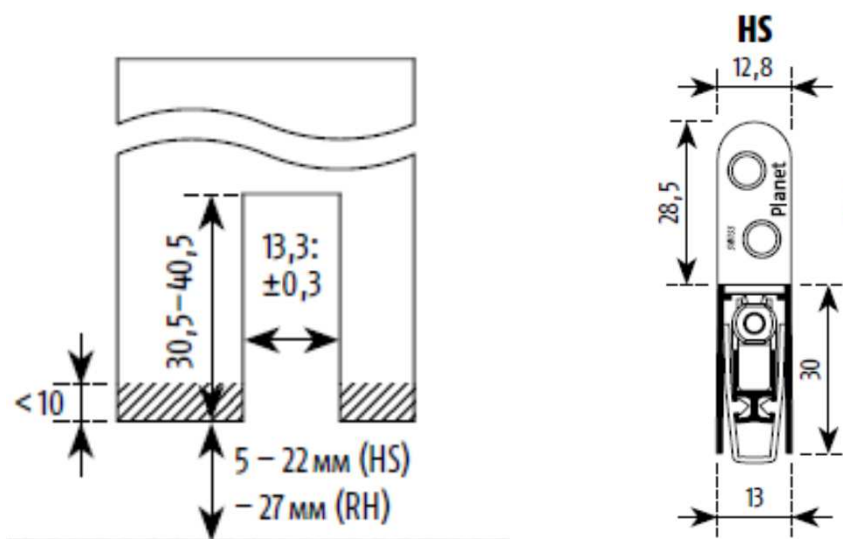
## Floor seal

The floor seal is an invisible seal which is fitted in the special milling at the bottom of the door. When the door touches the frame, the seal drops down and closes the gap underneath the door. Once the door is being opened, the seal is automatically lifted.

Dimensions	13 x 30 mm
Application	CubiQ interior door flat floors bridges 22 mm in height



## Setting the floor seal



Einstellen Hub mit Imbußschlüssel (3 mm), Bodenanpressung vermeiden! (siehe Dichtungshöhe **E**), Funktionskontrolle

Lift height adjustment with allen key 3 mm, avoid pressing to the floor! (see seal height **E**), operational check

Régler la course avec clé Imbus 3 mm, éviter le pressage au sol! (voir hauteur du joint **E**), contrôle de fonctionnement