

Table of dimensions

Door frame solutions CubiQ

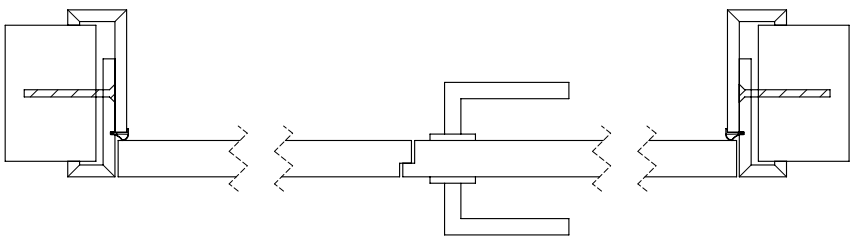
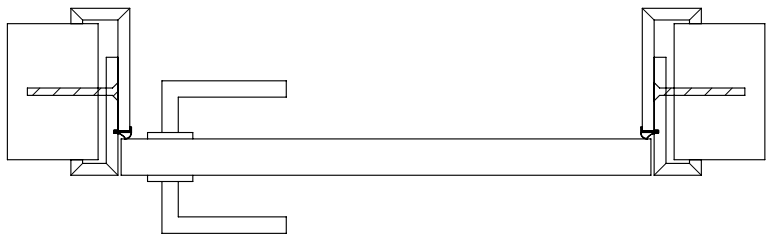
BOD'OR

Table of dimensions door frame solutions CubiQ

	Seite
Cube on the wall - with chiseling wall	4
Cube on the wall - without chiseling wall	6
Cube flush with the wall 6 mm shadow gap	8



CubiQ on the wall - with chiseling wall



Single door

	A			B			H			F			I			C		
	Structural wall opening			Door dimension			Frame rebate dimension			Frame outer dimension			Frame outer edge dimension			Clearance dimension		
	+ 51 mm			0			+ 7 mm			+ 111 mm			+ 32 mm			- 19 mm		
	Height	x	Width	Height	x	Width	Height	x	Width	Height	x	Width	Height	x	Width	Height	x	Width
Width			635			584			591			695			616			565
			760			709			716			820			741			690
			885			834			841			945			866			815
Height	+ 38 mm			0			+ 8 mm			+ 60 mm			+ 20 mm			- 5 mm		
	2053			2015			2023			2075			2035			2010		
	2153			2115			2123			2175			2135			2110		
	2260			2222			2230			2282			2242			2217		
	2385			2347			2355			2407			2367			2342		

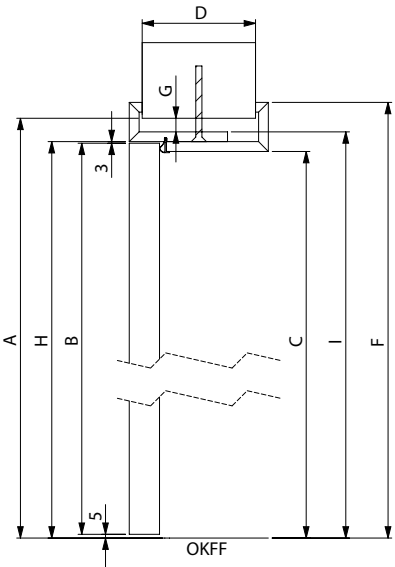
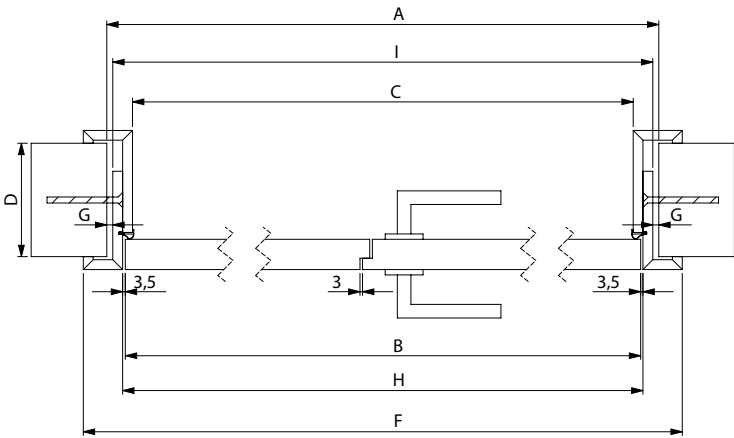
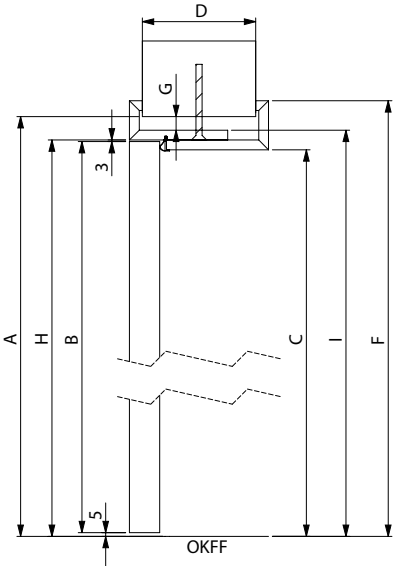
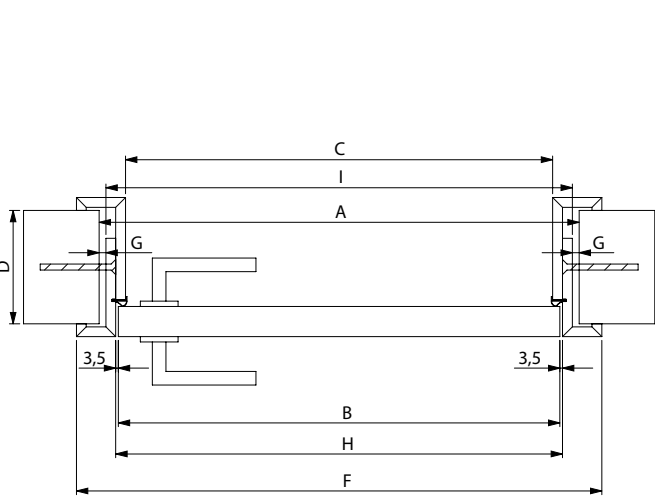
Finished wall thickness min. 65 mm
Installation space: Width 2 x 9,5 = 19 mm Top 18 mm

Double door

	A			B			H			F			I			C		
	Structural wall opening			Door dimension			Frame rebate dimension			Frame outer dimension			Frame outer edge dimension			Clearance dimension		
	+ 66 mm			0			+ 7 mm			+ 111 mm			+ 32 mm			- 19 mm		
	Height	x	Width	Height	x	Width	Height	x	Width	Height	x	Width	Height	x	Width	Height	x	Width
Width			1500			1434			1441			1545			1466			1415
			1750			1684			1691			1795			1716			1665
			2000			1934			1941			2045			1966			1915
Height	+ 38 mm			0			+ 8 mm			+ 60 mm			+ 20 mm			- 5 mm		
	2053			2015			2023			2075			2035			2010		
	2153			2115			2123			2175			2135			2110		
	2260			2222			2230			2282			2242			2217		
	2385			2347			2355			2407			2367			2342		

* 2 x 722 mm
* 2 x 847 mm
* 2 x 972 mm

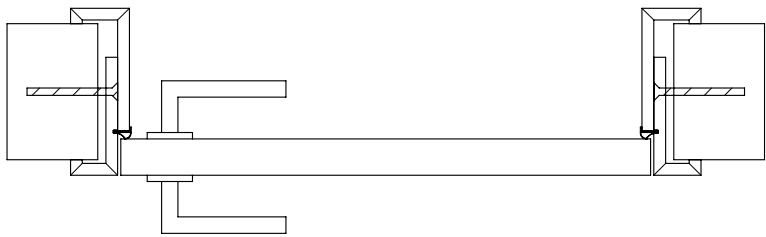
Finished wall thickness min. 65 mm
Installation space: Width 2 x 9,5 = 19 mm Top 18 mm



OKFF = Oberkante Fertig Fußboden
Top finished floor

OKFF = Oberkante Fertig Fußboden
Top finished floor

CubiQ on the wall - without chiseling wall

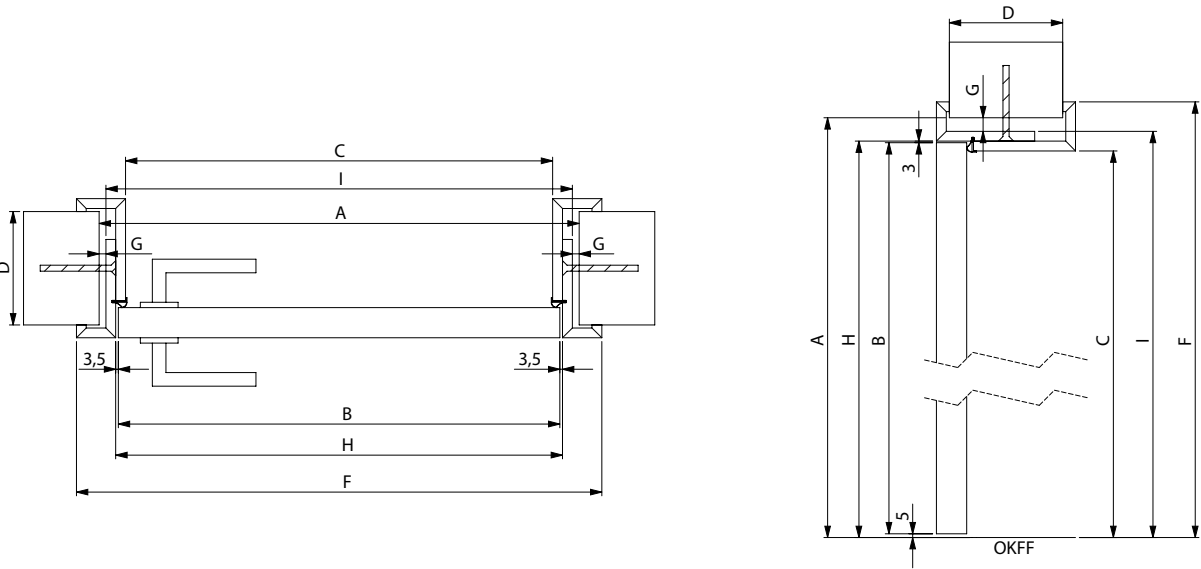


Single door

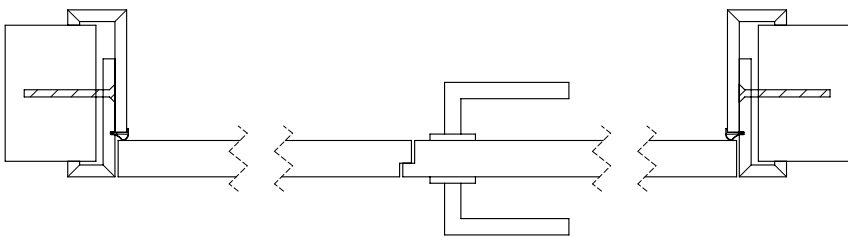
Width	A			B			H			F			I			C		
	Structural wall opening			Door dimension			Frame rebate dimension			Frame outer dimension			Frame outer edge dimension			Clearance dimension		
	+ 76 mm			0			+ 7 mm			+ 111 mm			+ 32 mm			- 19 mm		
	Height	x	Width	Height	x	Width	Height	x	Width	Height	x	Width	Height	x	Width	Height	x	Width
			660			584			591			695			616			565
			785			709			716			820			741			690
			910			834			841			945			866			815
			1035			959			966			1070			991			940

Height	+ 38 mm		0		+ 8 mm		+ 60 mm		+ 20 mm		- 5 mm	
	2053	2015	2153	2115	2260	2222	2385	2347	2023	2175	2230	2355
	2053	2015	2153	2115	2260	2222	2385	2347	2023	2175	2230	2355
	2053	2015	2153	2115	2260	2222	2385	2347	2023	2175	2230	2355

Finished wall thickness min. 65 mm
Installation space: Width 9,5+24+9,5 = 43 mm Top 18 mm



OKFF = Oberkante Fertig Fußboden
Top finished floor



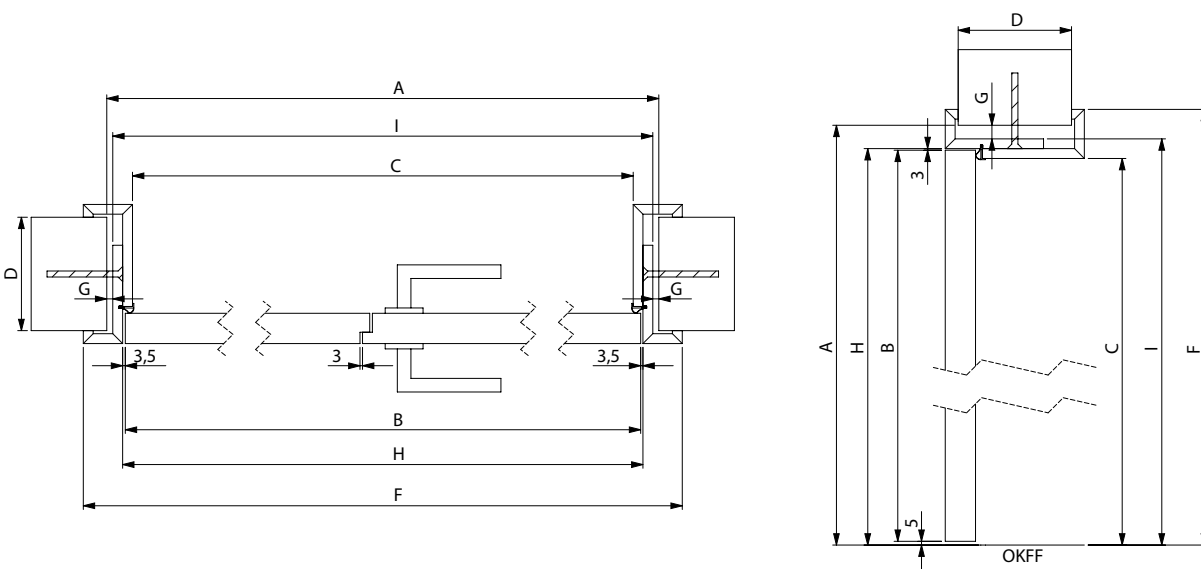
Double door

Width	A			B			H			F			I			C		
	Structural wall opening			Door dimension			Frame rebate dimension			Frame outer dimension			Frame outer edge dimension			Clearance dimension		
	+ 91 mm			0			+ 7 mm			+ 111 mm			+ 32 mm			- 19 mm		
	Height	x	Width	Height	x	Width	Height	x	Width	Height	x	Width	Height	x	Width	Height	x	Width
			1525			1434			1441			1545			1466			1415
			1775			1684			1691			1795			1716			1665
			2025			1934			1941			2045			1966			1915

Height	+ 38 mm		0		+ 8 mm		+ 60 mm		+ 20 mm		- 5 mm	
	2053	2015	2153	2115	2260	2222	2385	2347	2023	2175	2230	2355
	2053	2015	2153	2115	2260	2222	2385	2347	2023	2175	2230	2355
	2053	2015	2153	2115	2260	2222	2385	2347	2023	2175	2230	2355

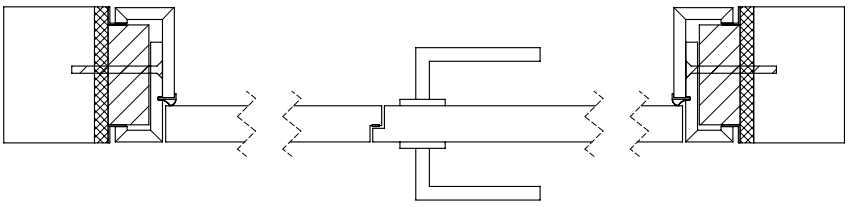
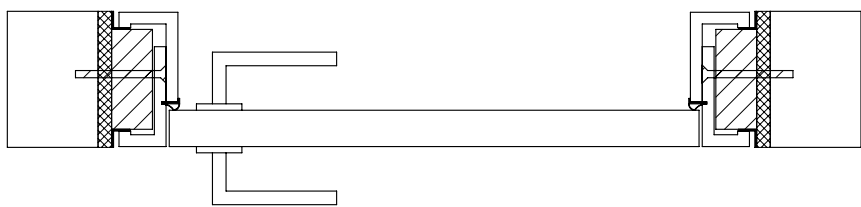
* 2 x 722 mm
* 2 x 847 mm
* 2 x 972 mm

Finished wall thickness min. 65 mm
Installation space: Width 9,5+40+9,5 = 59 mm Top 18 mm



OKFF = Oberkante Fertig Fußboden
Top finished floor

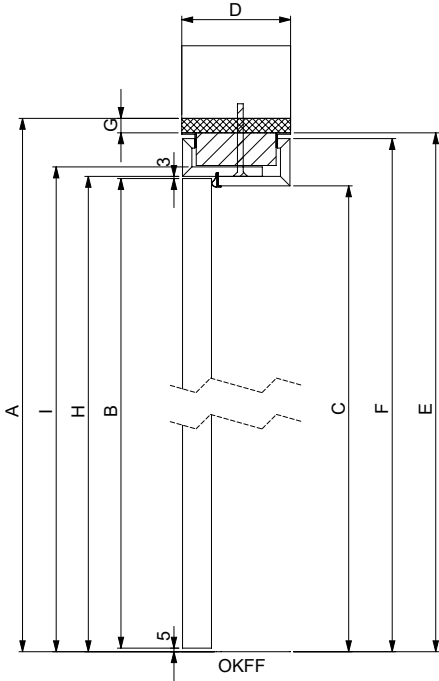
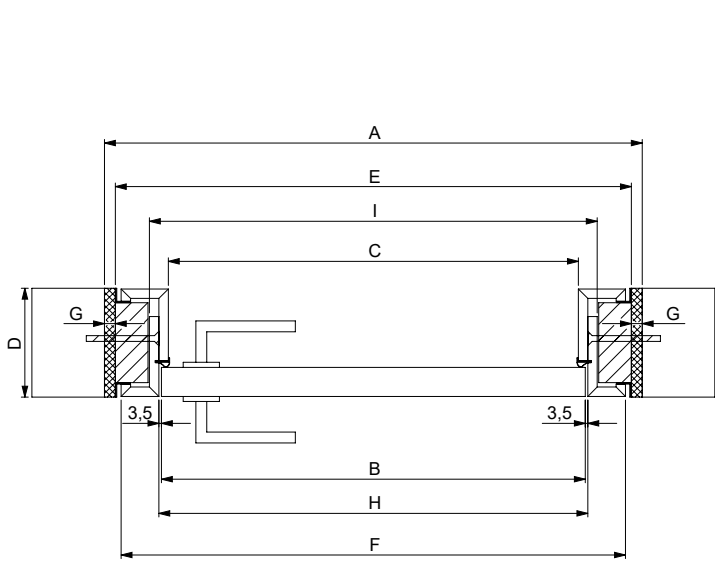
CubiQ flush 6 mm shadow gap



Single door

Width	A			E			B			H			F			I			C		
	Structural wall opening			Subframe outer dimension			Door dimension			Frame rebate dimension			Frame outer dimension			Frame outer edge dimension			Clearance dimension		
	+ 147 mm			+ 127 mm			0			+ 7 mm			+ 111 mm			+ 32 mm			- 19 mm		
	Height	x	Width	Height	x	Width	Height	x	Width	Height	x	Width	Height	x	Width	Height	x	Width	Height	x	Width
			731			711			584			591			695			616			565
			856			836			709			716			820			741			690
Height	+ 78 mm			+ 68 mm			0			+ 8 mm			+ 60 mm			+ 20 mm			- 5 mm		
	Height	x	Width	Height	x	Width	Height	x	Width	Height	x	Width	Height	x	Width	Height	x	Width	Height	x	Width
	2093			2083			2015			2023			2075			2035			2010		
	2193			2183			2115			2123			2175			2135			2110		
	2300			2290			2222			2230			2282			2242			2217		
	2425			2415			2347			2355			2407			2367			2342		

Dimensions based on:
Installation space width: 2 x 10 mm = 20 mm Finished wall thickness min. 100 mm
Installation space top: 10 mm



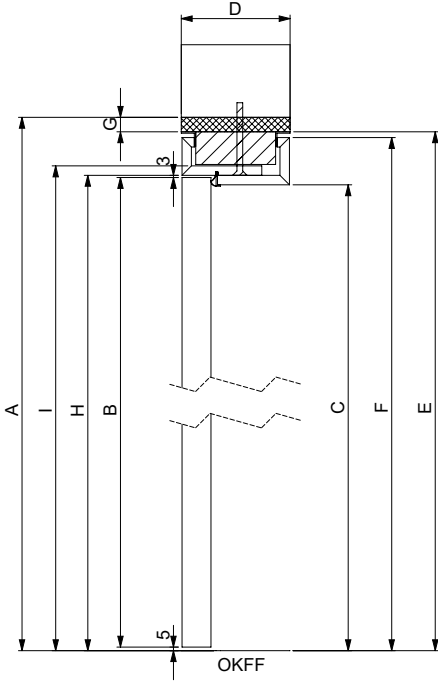
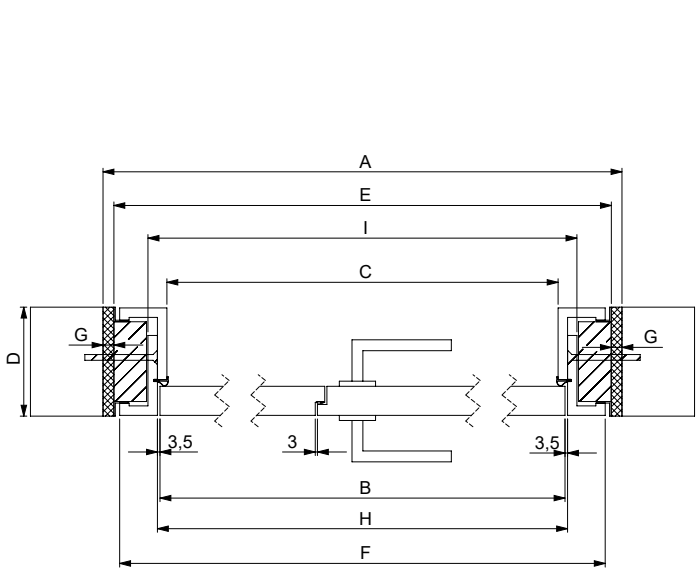
OKFF = Oberkante Fertig Fußboden
Top finished floor

Double door

Width	A			E			B			H			F			I			C		
	Structural wall opening			Subframe outer dimension			Door dimension			Frame rebate dimension			Frame outer dimension			Frame outer edge dimension			Clearance dimension		
	+ 147 mm			+ 127 mm			0			+ 7 mm			+ 111 mm			+ 32 mm			- 19 mm		
	Height	x	Width	Height	x	Width	Height	x	Width	Height	x	Width	Height	x	Width	Height	x	Width	Height	x	Width
			1581			1561			1434			1441			1545			1466			1415
			1831			1811			1684			1691			1795			1716			1665
Height	+ 78 mm			+ 68 mm			0			+ 8 mm			+ 60 mm			+ 20 mm			- 5 mm		
	Height	x	Width	Height	x	Width	Height	x	Width	Height	x	Width	Height	x	Width	Height	x	Width	Height	x	Width
	2093			2083			2015			2023			2075			2035			2010		
	2193			2183			2115			2123			2175			2135			2110		

* 2 x 722 mm
* 2 x 847 mm
* 2 x 972 mm

Dimensions based on:
Installation space width: 2 x 10 mm = 20 mm Finished wall thickness min. 100 mm
Installation space top: 10 mm



OKFF = Oberkante Fertig Fußboden
Top finished floor

bod'or

WWW.BODOR.EU

Bod'or KTM GmbH

Benzstraße 17

D - 46395 Bocholt (Germany)

T: +49 (0)28 71 - 21 45 0

F: +49 (0) 28 71 - 18 44 00

E: info@bodor.eu