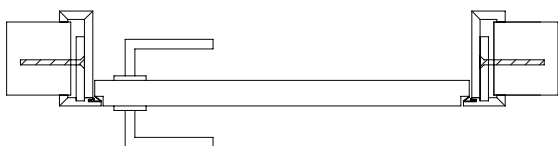


RE-Cube on the wall



Single door

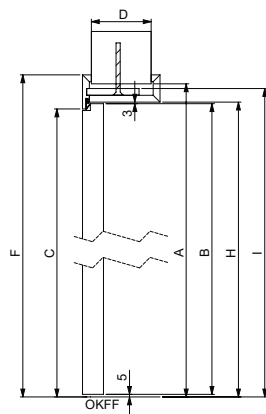
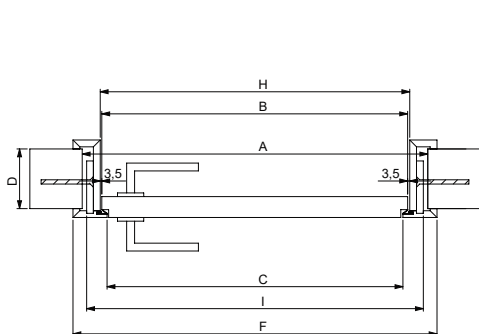
	A Structural wall opening			B Door dimension			H Frame rebate dimension			F Frame outer edge dimension			I Frame outer edge dimension			C Clearance dimension		
Width	+ 76 mm			0			+ 7 mm			+ 111 mm			+ 66 mm			- 19 mm		
	Height	x	Width	Height	x	Width	Height	x	Width	Height	x	Width	Height	x	Width	Height	x	Width
			660			584			591			695			650			565
			785			709			716			820			775			690
			910			834			841			945			900			815
			1035			959			966			1070			1025			940
Height			1160			1084			1091			1195			1150			1065
			1285			1209			1216			1320			1275			1190

Height	+ 43 mm		0		+ 8 mm		+ 60 mm		+ 34 mm		- 5 mm	
	2058	2015	2023	2075	2049	2010						
	2158	2115	2123	2175	2149	2110						
	2265	2222	2230	2282	2256	2217						
	2390	2347	2355	2407	2381	2342						
	2515	2472	2480	2532	2506	2467						
	2640	2597	2605	2657	2631	2592						
	2765	2722	2730	2782	2756	2717						
	2890	2847	2855	2907	2881	2842						
	3015	2972	2980	3032	3006	2967						

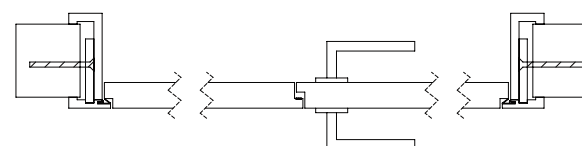
Finished wall thickness min. 65 mm

Attention: Frames are delivered at exact wall thickness. There is no tolerance for walls that do not have same thickness at all positions

Installation space: Width 2 x 5 = 10 mm Top 9 mm



OKFF = Oberkante Fertig Fußboden
Top finished floor



Double door

	A Structural wall opening			B Door dimension			H Frame rebate dimension			F Frame outer edge dimension			I Frame outer edge dimension			C Clearance dimension		
Width	+ 76 mm			0			+ 7 mm			+ 111 mm			+ 66 mm			- 19 mm		
	Height	x	Width	Height	x	Width	Height	x	Width	Height	x	Width	Height	x	Width	Height	x	Width
			1510			1434			1441			1545			1500			1415
			1760			1684			1691			1795			1750			1665
Height			2010			1934			1941			2045			2000			1915

Height	+ 43 mm		0		+ 8 mm		+ 60 mm		+ 34 mm		- 5 mm	
	2058	2015	2023	2075	2049	2010						
	2158	2115	2123	2175	2149	2110						
	2265	2222	2230	2282	2256	2217						
	2390	2347	2355	2407	2381	2342						
	2515	2472	2480	2532	2506	2467						
	2640	2597	2605	2657	2631	2592						
	2765	2722	2730	2782	2756	2717						
	2890	2847	2855	2907	2881	2842						
	3015	2972	2980	3032	3006	2967						

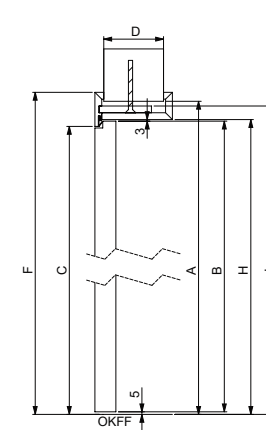
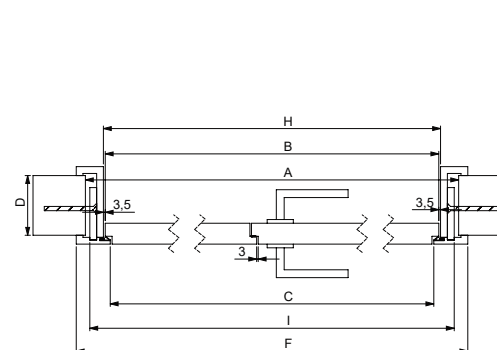
* 2 x 722 mm

* 2 x 847 mm

* 2 x 972 mm

Finished wall thickness min. 65 mm

Installation space: Width 2 x 5 = 10 mm Top 9 mm



OKFF = Oberkante Fertig Fußboden
Top finished floor